

## Adroit DV51- DV51CH Units Filter Maintenance Guide

**MVHR (Mechanical Ventilation with Heat Recovery)** units require regular filter maintenance (cleaning or replacement). The Airflow MVHR units have been designed to facilitate convenient access to the filters with easy maintenance in mind. The Airflow filters are tested and compliant with ISO 16890.

This filter replacement guide is specific for the following products. (It also applies to the EPH unit versions):

Product no	Description
90001174	DV51CH (R) Adroit with white cooker hood & integral CO <sub>2</sub> sensor
90001175	DV51CH (L) Adroit with white cooker hood & integral CO <sub>2</sub> sensor
90001172	DV51CH (R) Adroit with stainless steel cooker hood & integral CO <sub>2</sub> sensor
90001173	DV51CH (L) Adroit with stainless steel cooker hood & integral CO <sub>2</sub> sensor
90001184	DV51(R) Adroit with integral CO <sub>2</sub> sensor
90001185	DV51(L) Adroit with integral CO <sub>2</sub> sensor

### Filter replacement indication

This unit does not have a safety switch that turns the power off when the door is opened.

Always disconnect the power plug before starting the ventilation unit maintenance. The maintenance reminder indicates filter replacement with a pop-up window.



To acknowledge the maintenance reminder message, press the tick button.

Press the back button to postpone the reminder for one week.

When the maintenance reminder is activated, check the cleanliness of the filters and replace them if required.

The Adroit ventilation unit has three air filters:

2 x ISO Coarse > 75% (G4) - complies to ISO 16890, coarse filter; filters insects, heavy pollen and other relatively large foreign objects out of the outdoor air (A).

1 x ISO ePM1 50% (F7) filters - complies to ISO 16890 fine filter; filters microscopic pollen and dust particles out of the supply air (B).

The coarse filter; filters the extract air and keeps the heat recovery cell clean (C).

The filter replacement interval depends on the ambient particle concentration. It is recommended that the filters are replaced every spring and autumn or at the very least once a year.

### To replace the filters, follow the next steps:

1. Disconnect the ventilation unit from the mains power supply.

2. Open the door of the unit.

**CAUTION:** The door is heavy.

3. Lift the door off.

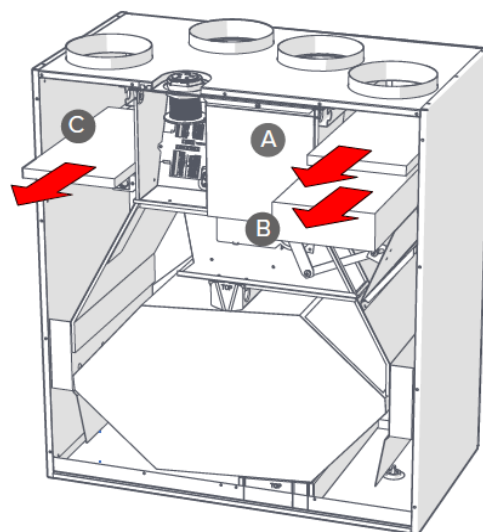
4. Remove the old filters (A, B, C) and discard them.

5. Install the new filters (A, B, C).

6. Close the door of the unit.

7. Plug the ventilation unit back into the mains.

8. The filters have now been successfully replaced.

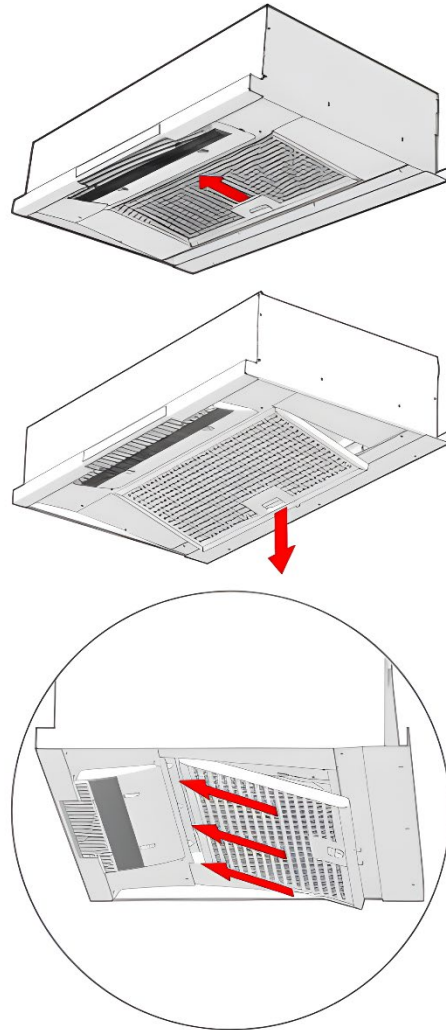


Using original filters ensures that the ventilation unit has high performance.

## Cleaning the grease filter of the cooker hood:

Warning: Neglecting the cleaning of the grease filter can cause a fire hazard.

Keep the cooker hood clean. Wipe outer surfaces regularly with water containing a small amount of mild detergent. Clean off any grease stains immediately. Do not use abrasive or corrosive detergents or tools. Keep the grease filter clean to ensure an adequate extract air flow. The grease filter must be washed with warm water and detergent or in a dishwasher at least 1-2 times a month.



To remove and mount the grease filter:

1. Pull the locking device of the grease filter towards the edge of the cooker hood while pulling the grease filter downwards until it comes off.
2. Clean the grease filter either by washing it with hot water and hand-washing detergent or in a dishwasher.
3. Mount the grease filter back in place. Push the front edge of the filter onto the shelf of the cooker hood and lift the rear edge in place with the locking device pressed down.

Ensure that the locking device points downwards.

The cooker hood has a long-lasting LED lighting module. If the light is not working, contact a servicing company.

Product no	Description	Dimensions (mm)
90001843	DV51/51CH Adroit Filter Set	G4 ISO Coarse > 75% - 319 x 146 mm G4 ISO Coarse > 75% - 317 x 144 mm F7 ePM1 55% - 319 x 146 mm