

FIRE RATED METAL CEILING AIR VALVES

SUPPLY & EXTRACT

Recessed ceiling air valves are widely used in both domestic and commercial buildings. Ceilings must be fire protected in accordance with Approved Document B of the Building Regulations.

Once a hole is made in a ceiling for an air valve, the integrity of the construction and its ability to perform in a fire is reduced significantly. This must be firestopped to reinstate the original fire rating of the ceiling.

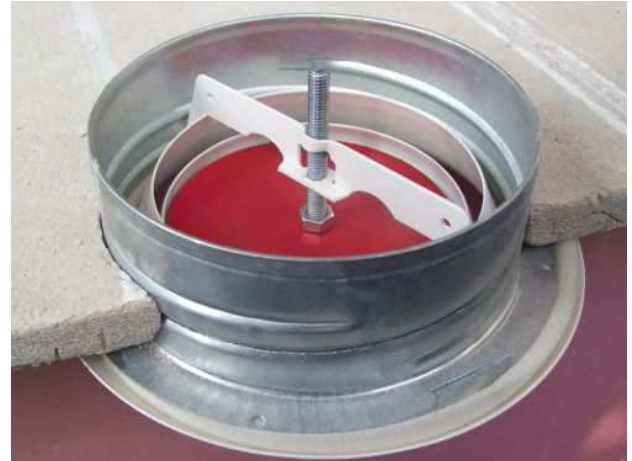
The popularity of whole house ventilation and controlled ventilation is increasing. This results in an increased number of penetrations through fire compartment walls and floors producing open pathways for the passage of both smoke and fire.

Ceiling air valves, if left unprotected, allow a fire to spread rapidly through a building.

Fire Rated Ceiling Air Valves solve this problem.

Key Features & Benefits

- Meets the requirements of Building Regulations Document B
- Maintains integrity of Fire Rated ceilings for up to 60 minutes
- Both Extract & Supply versions available
- Fits in the same way as a standard air valve
- Easy to retro fit in place of existing valves



Fire Rated Ceiling Air Valve installed before a fire



Fire Rated Ceiling Air Valve sealed after a fire

TEST DATA

Fire Testing

Successfully tested for 60 minutes according to BS EN 1365-2:1999 & BS476

FIRE RATED METAL CEILING AIR VALVES

The **Fire Rated Ceiling Air Valves** have been developed to provide maximum protection for penetrations created by Air Valves fitted in fire rated ceilings.

The Fire Rated Air Valves do not require any additional supports or fixing and can be fitted as standard.

The unique intumescent gasket material does not restrict the functionality on airflow through the valves. However, in a fire situation, the intumescent material rapidly expands to seal off the open air valve.

The penetration is then sealed against the spread of fire and smoke while ensuring the the fire rating of the ceiling construction is maintained.

Part numbers:

90002216 - 125mm dia Fire Rated Extract Valve (RAL9010)

90002217 - 125mm dia Fire Rated Extract Valve (RAL9016)

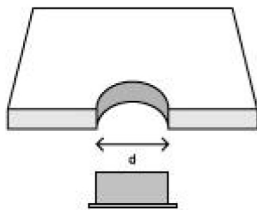
90002218 - 125mm dia Fire Rated Supply Valve (RAL9010)

90002219 - 125mm dia Fire Rated Supply Valve (RAL9016)

FITTING INSTRUCTIONS

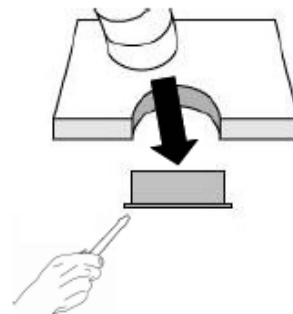
STEP ONE

Cut hole in ceiling to suit the outside diameter of the air valve mounting ring



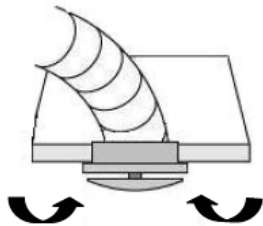
STEP TWO

Attach ducting onto the air valve mounting ring and fix to the ceiling via the screw holes in the mounting ring fange and/or with suitable mastic



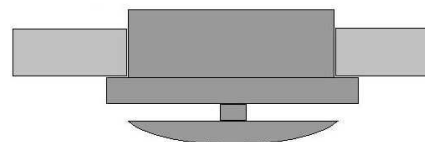
STEP THREE

Fit the body of the valve into the mounting ring with a quarter turn twist and set inner cone clearance to provide required air flow



STEP FOUR

Ensure the air valve is fitted snugly within the ceiling with no gaps or voids



Call: 01494 525252

Visit: airflow.com



Airflow Developments Limited
Aidelle House, Lancaster Road,
Cressex Business Park,
High Wycombe, Buckinghamshire,
United Kingdom, HP12 3QP

E-mail: info@airflow.com
Telephone: +44 (0) 1494 525252

airflow.com

© Airflow Developments Limited. Airflow Developments Limited reserve the right, in the interests of continuous development, to alter specifications without prior notice. All orders are accepted subject to our conditions of sale which are available on request

80001655 Issue 1 09/24

