



Model. KRP1SM

Smiley Swivel Wall Mounting Bracket for 10W LED floodlight

Features & Benefits

There are currently no features entered for this product item.

Safety Information

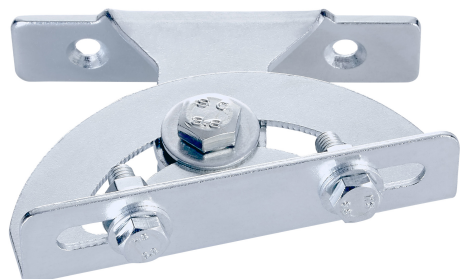
IMPORTANT - Before undertaking any work on or maintenance of fitting:-

- Switch off power supply and allow sufficient time to cool before handling
- Do not dispose of decommissioned fitting in household waste
- Dispose of fitting in the appropriate section of your local civic amenity site or recycling centre only

Product Summary

Technical Specifications

General Information	
Product Colour/Finish	Zinc Plated
Electrical	
Performance Data	
Sensor	
Emergency	
Construction	
Body Material	Low Carbon Steel
Weight	0.20Kg - Max. Loading Weight 1Kg
Other	
Applications	Suitable for use with 10W LED floodlight



LIGHTING DESIGN

IMPORTANT!

We now offer a full lighting design service exclusively to all our customers

COMPLETELY FREE