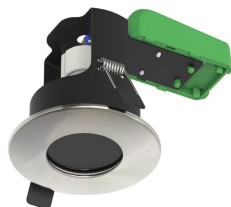


## Model. ODL10SC

Quick Connect Open Downlight GU10 - Satin Chrome (IP65)



### Features & Benefits

There are currently no features entered for this product item.

### Safety Information

**IMPORTANT** - Before undertaking any work on or maintenance of fitting:-

- Switch off power supply and allow sufficient time to cool before handling
- Do not dispose of decommissioned fitting in household waste
- Dispose of fitting in the appropriate section of your local civic amenity site or recycling centre only

### Product Summary

#### Technical Specifications

General Information	
Product Colour/Finish	Satin Chrome
Dimensions (mm)	85 x 106.5
Ingress Protection (IP)	IP 65
Cut Hole (Ø)	73mm
Electrical	
Input Voltage (V)	220-240
Frequency - (Hz)	50/60
Dimmable (Y/N)	Depends on lamp installed
Approvals	CE
Performance Data	
Type (Single or Twin)	Single
Class	I
Construction	
Body Material	Metal Bezel
Weight	150g
Warranty Period (Years)	1
Others	
Applications	Domestic, Commercial

### LIGHTING DESIGN

#### IMPORTANT!

We now offer a full lighting design service exclusively to all our customers

**COMPLETELY FREE**