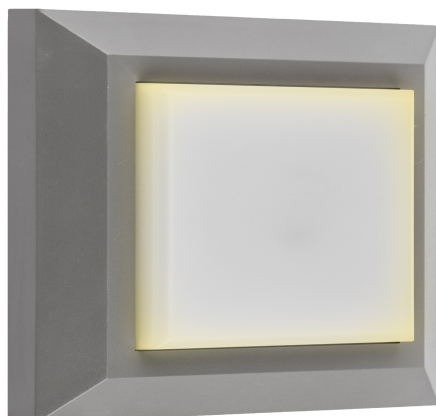


## Model. OLSQ4PC

TERRA 3.8W Outdoor Step Light 3CCT



### Features & Benefits

- CCT3 3000/4000/6500K
- IP65 - Can be used inside or outside

### Safety Information

**IMPORTANT** - Before undertaking any work on or maintenance of fitting:-

- Switch off power supply and allow sufficient time to cool before handling
- Do not dispose of decommissioned fitting in household waste
- Dispose of fitting in the appropriate section of your local civic amenity site or recycling centre only

### Product Summary

### Technical Specifications

General Information	
Product Colour/Finish	Grey
Dimensions (mm)	125 x 27 x 125
Ingress Protection	IP 65
Electrical	
Input Voltage (V)	220-240
Frequency (Hz)	50/60
Wattage (W)	3.8
Wattage Equivalent (W)	35
Dimmable (Y/N)	N
Approvals	CE
Class	II
Input Protection (Kv)	500v
Performance Data	
Useful Lumen Output	300
Lumens (Per Watt)	78.95
Power Factor	0.4
Average Lifespan (Hours)	30000
CRI: Ra	80
Colour Temperature (K)	3000/4000/6500
Beam Angle (°)	118
LED Type	SMD2835
Number of LED (pcs)	90
Energy Rating (ErP)	A++
No. Switches (max.)	50000
Sensor	
Emergency	
Construction	
Body Material	PC + ABS
Diffuser Material	PC
Weight	200g
Warranty Period (Years)	3
Other	
Applications	Outdoors, Walls, Alleyways, Commerical

## LIGHTING DESIGN

### IMPORTANT!

We now offer a full lighting design service exclusively to all our customers

**COMPLETELY FREE**