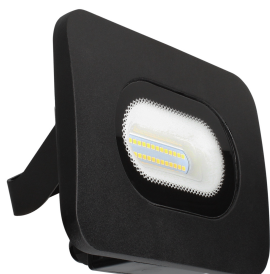


Model. OVFL20

20W LED Slim curved floodlight with IP65 integrated junction box, 1600Lm, 6500K

Features & Benefits

- Durable, slim and curved design with in-built integrated junction box
- Angled bracket for easy installation and flexible positioning
- Complete with 3x1.0mm2 cable and energy-saving LED luminaire
- Black powder coated die-cast aluminium body with heat dissipater and clear tempered glass



Safety Information

IMPORTANT - Before undertaking any work on or maintenance of fitting:-

- Switch off power supply and allow sufficient time to cool before handling
- Do not dispose of decommissioned fitting in household waste
- Dispose of fitting in the appropriate section of your local civic amenity site or recycling centre only

Technical Specifications

General Information	
Product Colour/Finish	Black
Dimensions (mm)	142x110x48mm
Cut-Hole Ø (mm)	N/A
Ingress Protection	IP65
Electrical	
Input Voltage (V)	220-240V
Frequency (Hz)	50/60Hz
Wattage (W)	20W
Dimmable (Y/N)	Non dimmable
Approvals	CE-LVD, CE-EMC and RoSH
Class	I
Inrush Current (mA)	160mA
Performance Data	
Useful Lumen Output	1600lm
Power Factor	>0.50
CRI: Ra	>70
Colour Temperature (K)	6500K
Beam Angle (°)	110°
LED Type	SMD2835
Number of LED (pcs)	28pcs
Sensor	
Sensor Interval (mins)	7sec~10mins
Sensor Range (Mtrs / °)	Max. 10m
Emergency	
Construction	
Body Material	Diecast Aluminium body
Diffuser Material	Clear tempered glass
Weight	335g
Warranty Period (Years)	2yrs
Warranty Period (Years)	2yrs
Other	
Applications	Architecture, parks and gardens, facades, roof top and billboard

LIGHTING DESIGN

IMPORTANT!

We now offer a full lighting design service exclusively to all our customers

COMPLETELY FREE