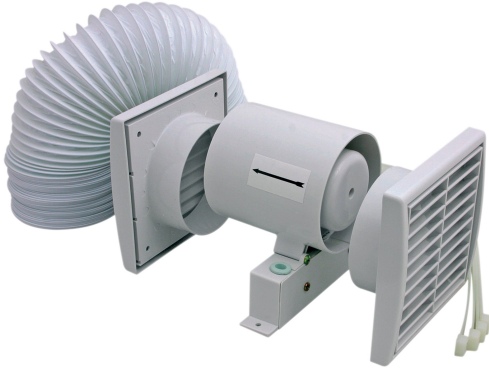


Model. XSF4S

4" Shower Fan (Standard)



Features & Benefits

- BS EN60335-1: 2012
- Kit comprises of two grills, one in-line fan and 3Mtr length of ducting with fixing cable ties
- Supplied with comprehension installation instructions
- Air movement: 95 cubic Mtrs/hr
- Power consumption: 4" - 20W (max)
- Voltage: 220-240V/50Hz

Safety Information

IMPORTANT - Before undertaking any work on or maintenance of fitting:-

- Switch off power supply and allow sufficient time to cool before handling
- Do not dispose of decommissioned fitting in household waste
- Dispose of fitting in the appropriate section of your local civic amenity site or recycling centre only

Technical Specifications

General Information	
Product Colour/Finish	White
Dimensions (mm)	156 x 147
Electrical	
Power Consumption	20W
Input Voltage (V)	220-240V
Frequency (Hz)	50Hz
Approvals	BS EN60335-1: 2012, CE, GS
Performance Data	
Timer	Continuous
Suitable mounting position	Flat Position
Air Volume/Velocity (cbm)	95
Noise level (dB)	48.6
Construction	
Other	
Applications	Suitable for kitchens, restaurants, offices and domestic use