

## Model. CEDPB232D

Patress Box Dual 32mm Deep to BS5733

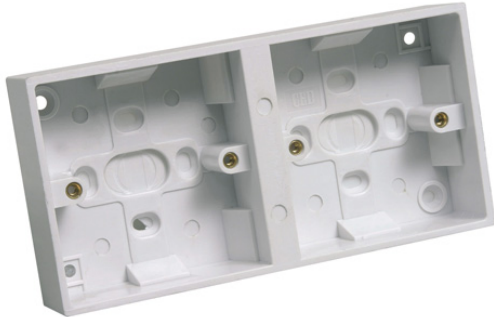
### Features & Benefits

There are currently no features entered for this product item.

### Safety Information

**IMPORTANT** - Before undertaking any work on or maintenance of fitting:-

- Switch off power supply and allow sufficient time to cool before handling
- Do not dispose of decommissioned fitting in household waste
- Dispose of fitting in the appropriate section of your local civic amenity site or recycling centre only



### Technical Specifications

<b>General Information</b>	
Colour/Finish	White
Dimensions (mm)	88 x 176 x 32mm
Fixing Centre (mm)	60.3mm
<b>Electrical</b>	
Approvals	BS-5733
<b>Performance Data</b>	
Outlets (1 / 2) etc	1 Gang
Knockouts	Rear
<b>Construction</b>	
Body	Urea Fomaldehyde
Warranty (Years)	25
<b>Other</b>	