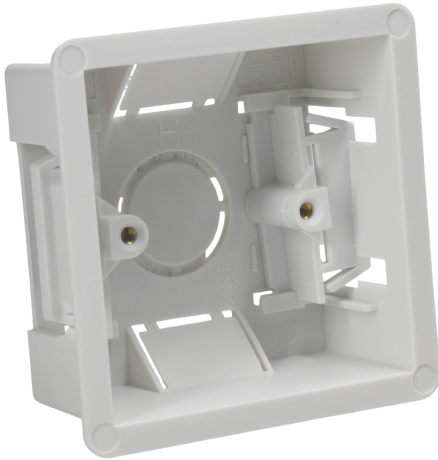


## Model. AXMDLB1

1 Gang Dry Lining Box 35mm



### Features & Benefits

- Large flange around front sides to prevent slipping into cavity
- Manufactured from flame retardant thermo-plastic material
- Two side cable entry plus 25mm base knockout
- Will fit board thickness 6.35mm - 15mm
- Back of the box can be used as template to mark box (cavity hole)
- Blue nylon lugs have one side lips to pull the lug easier with finger to grip the cavity wall

### Safety Information

**IMPORTANT** - Before undertaking any work on or maintenance of fitting:-

- Switch off power supply and allow sufficient time to cool before handling
- Do not dispose of decommissioned fitting in household waste
- Dispose of fitting in the appropriate section of your local civic amenity site or recycling centre only

### Technical Specifications

General Information	
Colour/Finish	White
Dimensions (mm)	83 x 83 x 35mm
Fixing Centre (mm)	60.3mm
Minimum Box Depth (mm)	35mm
Electrical	
Rated Operating Voltage (v)	240v
Kite Mark / ASTA	ASTA (lic. 919)
Performance Data	
Outlets (1 / 2) etc	1 Gang
Lugs	2
Knockouts	1 x each side / 1 x 25mm base
Construction	
Body	Plastic material
Weight	36g
Warranty (Years)	25
Other	