

# HT Fans

High temperature centrifugal fans



## KEY FEATURES

- Can move air at temperature up to 250°C
- Ecodesign ErP 2015 compliant
- Wide range of installation positions
- Intermediate cooling impeller minimises heat to motor and bearings ensuring long life
- Polyester high temperature paint
- Gas 'Tight' casing option available

## High Temperature Fans

Specifically designed direct drive fans to handle hot air or the products of combustion from gas burning appliances up to temperature of 250°C. The intermediate cooling impeller, an Airflow pioneering design, eliminates the problem of short motor/bearing life. The range covers

from 62 l/sec to 120 l/sec. Variant OEM Applications – are available on a made to order basis, (depending on quantities required) please apply to customer services for non standard designs.



## APPLICATIONS

- Overhead radiant tube heating
- Domestic and commercial ovens
- Boiler / heater flue fans
- Gas fire flue boosters

\* Note - Fans not suitable for EEXE, EEXD, ATEX or corrosive atmospheres

- Hot air extraction
- UV lamp cooling for printing
- Tunnel curing

## SPECIFICATIONS

Aluminium or mild steel impellers, housed in Zintec mild steel casing, finished in black polyester high temperature paint. Totally enclosed motors with integrated cooling impeller ensuring extended trouble free motor life, fitted with motor guard arrangement as standard. Able to be mounted from outlet flange or threaded inserts incorporated

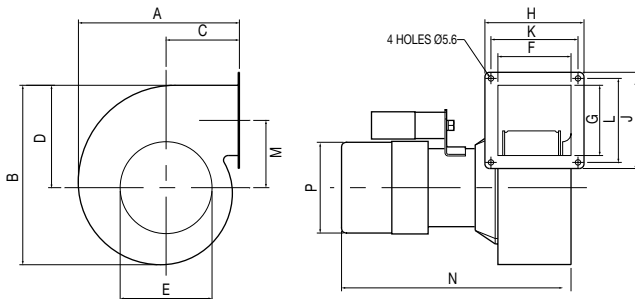
into the inlet face of the fan casing. Motors either shaded pole or permanent capacitor type using low maintenance sealed for life bearings ensuring a typical bearing life L10 – 25,000 in ideal conditions. Electrical connection is via 3 core cable for ease of installation. Test data in accordance with BS 848 Part 1/ ISO 5801-2007.

## TECHNICAL DATA

Fan Model	Supply voltage	Frequency	Capacitor value	Max running current	Start current (approx)	Max input watts	Max air flow	Min static pressure	Noise level	Speed at max air flow	Weight	Max ambient temp
	Volts	Hz	µF	Amperes	Amperes	Watts	Litres/s	Pascal	dBA*	Rev/m	kg	°C
45BTFRHT	230	50	N/a	0.55	0.75	85	60	25	53	2330	2.4	40●
52BTXRHT	230	50	2	0.53	1.03	125	102	54	58	2600	3.3	40●

\*at 1 metre ● Thermal Protection

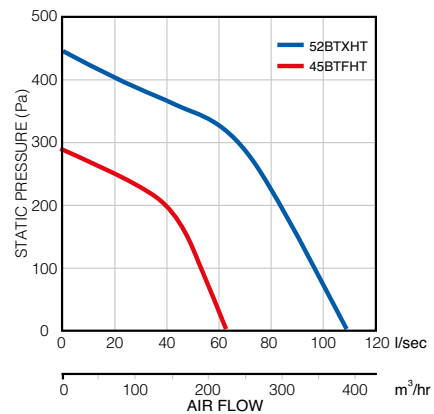
## DIMENSIONS



Fan Model	A	B	C	D	ØE INLET	F INSIDE	G INSIDE	H	J	K CRS	L CRS	M	N	ØP
45BTFRHT	172	189	79	107	95.5	60	70	103	113	87	97	70	198	100
52BTXRHT	195	216	89	124	111	64	89	117.5	117.5	88.9	73	78.5	216	100

Dimensions are for guidance only - certified drawings available

## PERFORMANCE



Call: 01494 525252

Visit: [airflow.com](http://airflow.com)



**Airflow Developments Limited**  
Aidelle House, Lancaster Road,  
Cressex Business Park,  
High Wycombe, Buckinghamshire,  
United Kingdom, HP12 3QP

E-mail: [info@airflow.com](mailto:info@airflow.com)  
Telephone: +44 (0) 1494 525252

[airflow.com](http://airflow.com)

© Airflow Developments Limited. Airflow Developments Limited reserve the right, in the interests of continuous development, to alter specifications without prior notice. All orders are accepted subject to our conditions of sale which are available on request



80000697 Issue 1 06/07